

## GWE1000 MDU Amplifier

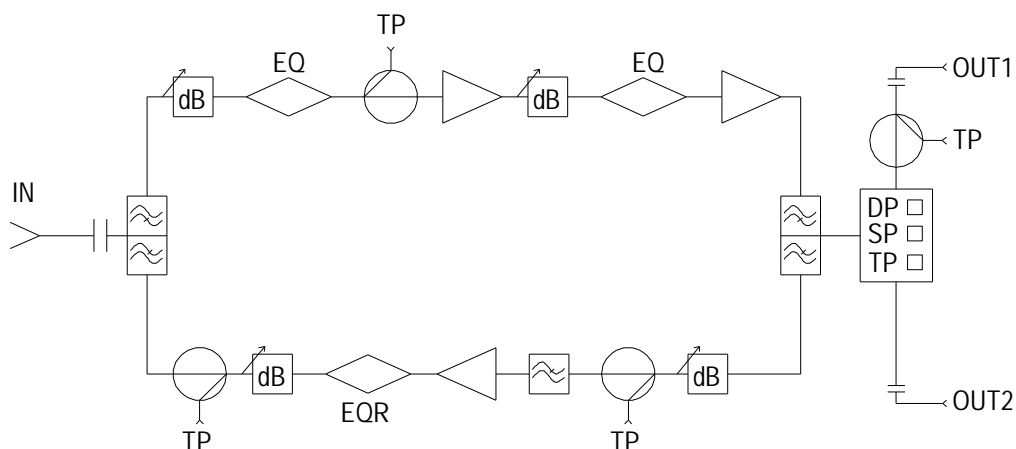


GWE1000 series RF amplifier is a cost-effective MDU amplifier designed for CATV trunk and distribution applications. Equipped with reliable switching power supply and surge protection, GWE1000 applies GaAs technology on both preamplifier and power amplifier, achieving the excellent distortion performance. The amplifier can be empowered by either 60V AC or 220V AC. Besides the main RF output, one additional tap or split RF output is also available.

### Features

- I High quality Aluminum Die Cast Housing
- I GaAs technology on forward path RF signal
- I High performance push-pull amplifier for wide range return signals
- I Duplexer for different bandwidth split plan
- I Pluggable tilt circuit, attenuation circuit and bandpass circuits
- I Additional one tap output or one split output option
- I High efficiency switching power supply handling 15A AC through current
- I -20dB test points at forward and reverse paths

### Block Diagram



## Specifications

### RF Parameter

	Item	Forward	Reverse	Notes
1	Frequency Range (MHz)	**~750/862	5~**	Bandwidth Split Plan
2	Flatness (dB)	±0.75	±0.75	
3	Reflection Loss (dB)	≥16	≥16	All ports
4	Gain (dB)	28/32	0/20/24	One RF Output
5	Full Gain (dB)	≥28/32	≥0/20/24	
6	Equalizer (dB)	0~20	0~10	2dB step
7	Noise Ratio (dB)	<9		
8	Monitoring RF Level (dB)	-20		
9	Monitoring Flatness (dB)	±1		
10	Working Voltage (V/DC)	+24		
11	AC Current (A/AC)	15		Max. through current
12	Gain Adjustment (dB)	0~20		
13	Impedance (Ω)	75		All ports
14	Hum Modulation (dB)	<-65		
15	C/CSO (dB)	68		
16	C/CTB (dB)	70	—	42dBmV

### Power Supply

Power input: AC 90V~265V (220V version) or 35V~95V (60V version)

Power Consumption: ≤24W, dissipating surges due to lightning, power transients etc..

### Environment

Working Temperature: -20°C~+60°C

Storage Temperature: -40°C~+85°C

Humidity: Maximum 95% non-condensing

### Physical Parameters

Dimensions: 280mm×197mm×120mm

Weight: <4 kg

### Customer Interface

RF connection: Metric F or American F

RF Monitoring: Metric F or American F

## Ordering Information

### GWE1000-A-BC-DEF-GH/IJ-K

A: 1- One RF only; 2T- one additional tap output; 2P- one additional split output

BC: 60- 60V power supply

220- 220V power supply

60A- 60V independent power supply

DEF: 750- 750MHz; none-862MHz

GH/IJ: none-forward only

XT- reverse path reserved

30/42- bandwidth split

65/87- bandwidth split

K: P- reverse direct pass; 20- reverse 20dB gain; 24- reverse 24dB gain

## Accessory Options

001: Attenuator Plug-in (0~20dB Option, 1dB step)

002: 0~20dB adjustable attenuator plug-in

003: Fixed value equalizer plug-in (0~20dB Option, 1dB step, 750MHz or 860MHz)

004: 0~20dB adjustable equalizer plug-in

005: Reverse Equalizer plug-in (0~10dB option, 2dB step)

006: Diplexer (30/42, 40/52, 42/54, 55/70, 65/87)