

GW6800C Analog Video/Audio Amplifier

GW6800C is a high-density platform for broadcast class analog video/audio amplifier. The video can be NTSC/PAL/SECAM video, YUV video. The audio amplifier has balanced/unbalanced conversion circuit and excellent output isolation.

Features:

- I 19" 1U or 2U Standard Chassis
- I Main and Standby Power Supply for 2U Chassis
- I Video and Audio Boards Can be In the Same Chassis
- I BNC Video Connection and 3 PIN Audio Connection
- I Excellent Video and Audio Performance



Specifications:

Analog Video Amplifier Board

VDA-6803 Video Differential Amplifier

Differential Input, High CMRR
Effective to the noises from grounding
Video Gain: -3dB~ +3dB
"1 In 8 Out" or Dual "1 In 4 Out"
30MHz Gain Bandwidth
Suggested Output Video Cable Length: 20 Meter



VDA-6804 Video Equalization Amplifier

Differential Input, High CMRR
Video Gain: -3dB~ +3dB
"1 In 8 Out" or Dual "1 In 4 Out"
30MHz Gain Bandwidth
Cable Equalization Continuously Adjustable
0~300m (1000ft) Belden8281
0~200m (660ft) RG59U



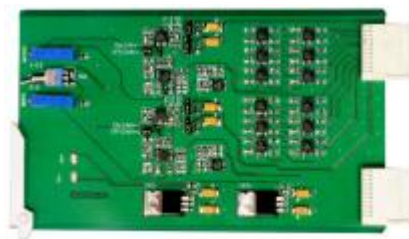
Video Amplifier Specifications:

Input: DC Coupling (default) or AC Coupling (optional)
2T Pulse K Factor: <0.10%
Output: 8 ports, 75Ω, Unbalanced, BNC
Video SNR: 72dB (unweighted, minimum)
Differential Gain: <0.15% (10-90% APL)
Differential Phase: 0.10° (10-90% APL)
Frequency Flatness: 0.1dB up to 8MHz
Gain: -3dB~+3dB adjustable

Analog Audio Amplifier Board

ADA-6802 Stereo Audio Amplifier

One Audio Input and 8 Audio Outputs or
Dual "One Audio Input and 4 Audio Outputs"
Balanced/Unbalanced Conversion Circuit
3 PIN Connection for Balanced or Unbalanced Audio
Independent Output Driving Circuit



Audio Amplifier Specifications:

Input: 3 PIN, 30KΩ, Balanced
 Common Mode Range: ±20V
 CMRR: >90dB@60Hz
 >60dB@20KHz
 Output: 3 PIN, 66Ω, Balanced
 Gain: -6dB~+27dB
 SNR: >100dB 20Hz~20KHz (Unweighted)
 Flatness: < ±0.05dB 20Hz~20KHz
 Total Harmonic Distortion: <0.05% 20Hz~20KHz

Chassis

2U Standard Chassis

GW6800-C210 is a 19", 2U chassis with main and standby power supply. Each of the built in power supply has 40W DA-PW Module. The GW6800-C210 chassis can install maximum 10 hot plug-in analog amplifier boards.

Dimension
 Width: 19" (483mm)
 Height: 2U (88mm)
 Depth: 12" (300mm)



1U Standard Chassis

GW6800-C114 is 19", 1U chassis with one 40W DA-PW power module. The GW6000-1U can install maximum 4 video or audio amplifier boards.

Dimension
 Width: 19" (483mm)
 Height: 1U (44mm)
 Depth: 15" (381mm)



Ordering Information:

| Part Number | Description |
|-------------|---|
| VDA -6803 | Video Amplifier Board, "1 In 8 Out" or dual "1 In 4 out" amplifier |
| VDA -6804 | Video Amplifier with equalization, "1 In 8 Out" or dual "1 In 4 out" amplifier |
| ADA -6802 | Audio Amplifier Board, "1 In 8 Out" or dual "1 In 4 out" amplifier |
| GW6800-C114 | 19" 1U Chassis with four slots for video or audio amplifier |
| GW6800-C210 | 19" 1U Chassis with dual power supply and 10 slots for video or audio amplifier |